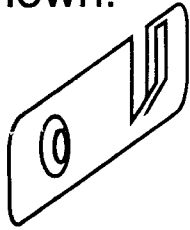
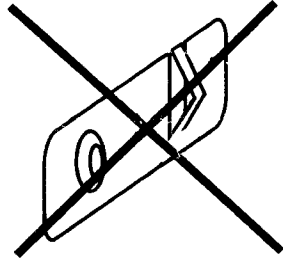


# IMPORTANT

1. When changing batteries, make sure the tabs on the battery door are bent out as shown.



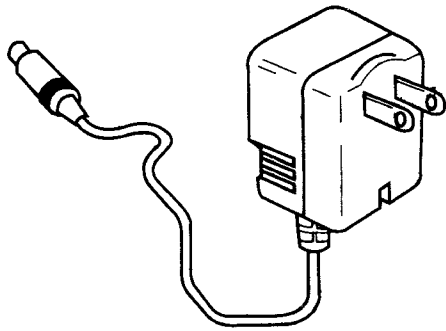
GOOD



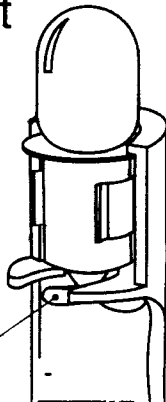
BAD

(fix by pulling out tabs)

2. Advance to multiple light games by using the SEGA optional AC adapter (Model #2103) in place of batteries. (we recommend Duracell® alkaline)



3. When replacing light bulbs, make sure that the base of the bulb makes contact with the contact plate, as shown to the right.



contact plate

4. TECHNIQUE:

Place hand quickly over orb, hold for a brief moment to achieve best activation. Keep fingers together.



GOOD



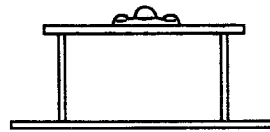
BAD



(remove rings & jewelry it fools game)

5. For best results, place game on an even surface above the floor, but away from structural overhangs. See diagram.

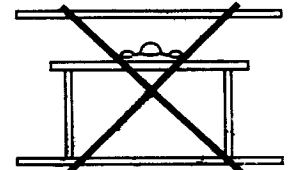
STANDARD HEIGHT  
SHELF OR CEILING



FLOOR

GOOD

LOW SHELF OR  
CEILING



FLOOR

BAD